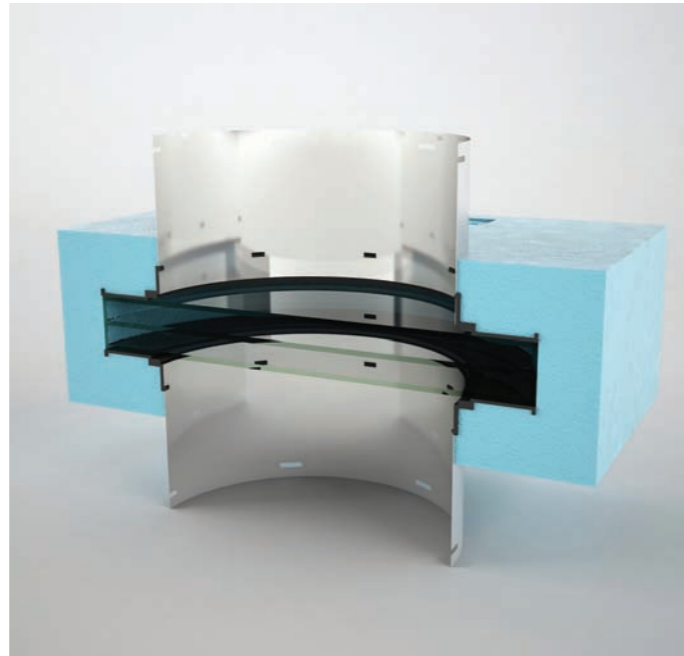
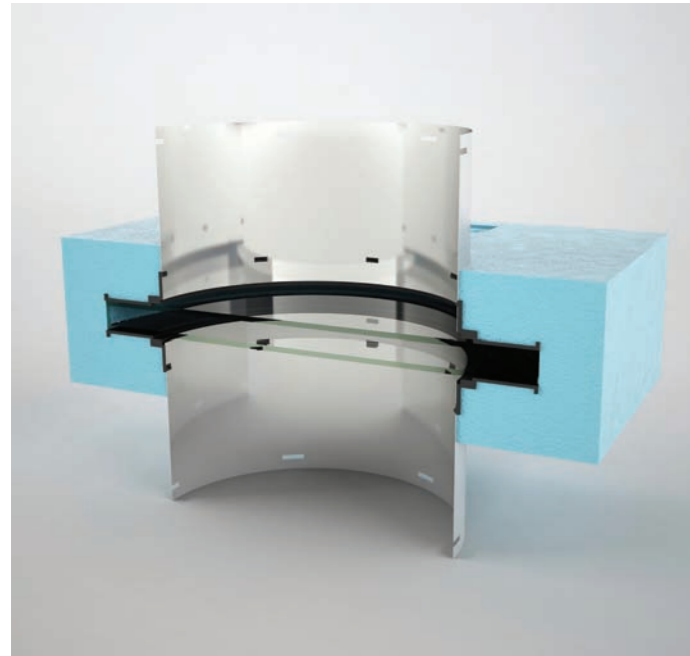


THE LIGHTWAY BLUE PERFORMANCE RANGE

NO CONDENSATION AND LEAKING OF WATER
FROM TUBULAR SKYLIGHTS
MINIMAL HEAT LOSSES AND GAINS
IN WINTER AND SUMMER



TYPE LW BP 0.6

Technical data:

$U = 0,6 \text{ W}/(\text{m}^2 \cdot \text{K})$ - value of the whole system
Insulation glass: double layer glass 4-16-4 (filling Argon)
Thermal insulation: Polystyrene XPS
Thickness of thermal insulation: 120 mm

Dimensions:

LW 300 - 470x470 mm
LW 400 - 570x570 mm
LW 600 - 885x885 mm
LW 800 - 1120x1120 mm
Height: 120 mm

Patent protection: Patent pending No. PV 2010 - 433
Utility model: PUV 2010 - 22789

TYPE LW BP 0.4

Technical data:

$U = 0,4 \text{ W}/(\text{m}^2 \cdot \text{K})$ - value of the whole system
Insulation glass: triple layer glass 4-16-4-16-4 (filling Argon)
Thermal insulation: Polystyrene XPS
Thickness of thermal insulation: 140 mm

Dimensions:

LW 300 - 470x470 mm
LW 400 - 570x570 mm
LW 600 - 885x885 mm
LW 800 - 1120x1120 mm
Height: 140 mm

HOW TO PREVENT LEAKING OF WATER FROM TUBULAR SKYLIGHTS AND PREVENT HEAT LOSSES?



THE LIGHTWAY BLUE PERFORMANCE RANGE

TUBULAR SKYLIGHTS
NOT ONLY FOR PASSIVHAUS

LIGHTWAY s.r.o
The manufacturer of Lightway tubular skylights
Hostivická 13/22, 155 00 Praha 5 - Sobín
phone +420 235 300 694
fax +420 235 300 218
info@lightway.cz

www.lightway.cz

 **lightway**[®]

contact@lightway.fr

 **lightway**[®]
tél 06 14 84 71 77



HOW TO...

- ensure the highest levels of natural daylight
- remove thermal bridges
- minimize heat loss
- eliminate condensation
- guarantee air tightness

...IN PASSIVHAUS BUILDINGS

**THE LIGHTWAY
BLUE PERFORMANCE RANGE**
TUBULAR SKYLIGHTS FOR PASSIVHAUS

